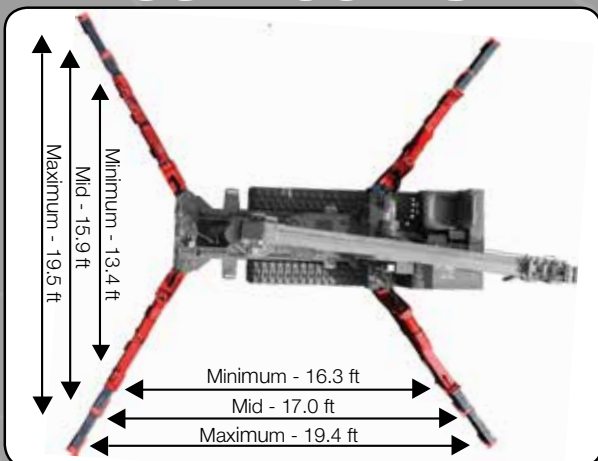


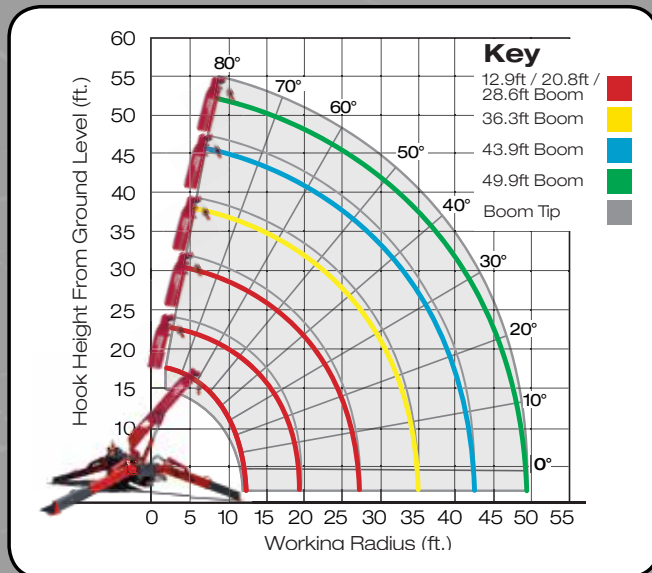


55ft Tip Height
5,800lbs Capacity
ASME/B-30.5 Compliant

OUTRIGGERS



WORKING RADIUS



LOAD CHART

Lifting capacity varies depending on outrigger configuration, boom length and angle.

BOOM SECTION 1 EXTENDED BOOM SECTIONS 1 + 2 EXTENDED BOOM SECTIONS 1 + 2 + 3 EXTENDED										
Working Radius (ft.)	10.0	12.1	13.0	14.0	16.0	18.0	21.0	24.0	28.0	
Outriggers Maximum (lbs.)	5,800	5,800	5,410	5,000	4,280	3,820	3,220	2,790	2,270	
Outriggers Mid (lbs.)	5,800	5,800	5,410	5,000	4,280	3,820	2,800	2,100	1,430	
Outriggers Minimum (lbs.)	5,800	5,800	5,410	4,880	3,890	3,060	2,140	1,510	1,060	
BOOM SECTIONS 1 + 2 + 3 + 4 EXTENDED										
Working Radius (ft.)	13.1	14.0	16.0	19.0	22.0	26.0	29.0	32.0	35.6	
Outriggers Maximum (lbs.)	4,470	4,240	3,700	3,070	2,620	2,190	1,980	1,770	1,410	
Outriggers Mid (lbs.)	4,470	4,240	3,700	3,070	2,540	1,670	1,420	1,140	850	
Outriggers Minimum (lbs.)	4,470	4,240	3,700	2,720	1,950	1,210	980	780	550	
BOOM SECTIONS 1 + 2 + 3 + 4 + 5 EXTENDED										
Working Radius (ft.)	16.4	18.0	22.0	26.0	29.0	32.0	36.0	39.0	43.3	
Outriggers Maximum (lbs.)	2,270	2,090	1,710	1,410	1,300	1,200	1,060	960	830	
Outriggers Mid (lbs.)	2,270	2,090	1,710	1,410	1,240	1,100	930	750	610	
Outriggers Minimum (lbs.)	2,270	2,090	1,710	1,200	980	780	620	520	440	
BOOM SECTIONS 1 + 2 + 3 + 4 + 5 + 6 EXTENDED										
Working Radius (ft.)	19.7	23.0	26.0	29.0	32.0	36.0	39.0	42.0	45.0	49.9
Outriggers Maximum (lbs.)	1,160	950	850	750	640	620	520	510	430	390
Outriggers Mid (lbs.)	1,160	950	850	750	640	620	520	510	430	390
Outriggers Minimum (lbs.)	1,160	950	850	750	640	550	510	450	410	280

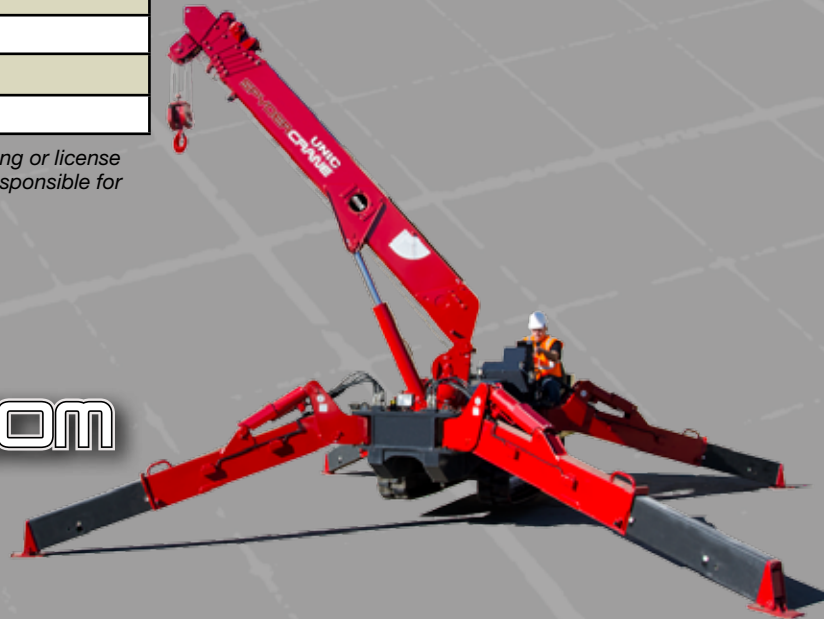
SPECIFICATIONS

	URW506C4URS	URW506C4UMRS	URW506C4UBRS
Engine / Motor	DIESEL	DIESEL Electric	DIESEL Battery Powered
Crane Capacity	5,800 lbs @12.1 ft		
Max Working Radius	49.9 ft		
Tip Height	55 ft		
Turning Radius	Turns within its dimensions		
Dimensions when Folded (ft.)	4.52 x 6.68 x 16.0 (W x H x L)		
Weight	10,935 lbs	11,435 lbs	11,975 lbs
Outrigger Point Loading	(Specific point landing available upon request)		
Winch Speed	Winch Drum: 300ft of Wire Rope 183.7 ft/min at 5th layer Hook: 45.9 ft/min at 5th layer		
Telescopic System	Boom Type: 6-Section hydraulically telescoping boom (36 ft. / 23 Seconds), with hexagonal box construction		
Telescoping Speed	37.6 ft / 34.5 seconds		
Swing Rotation	360° Continuous Worm Drive		
Boom Lift Speed	0° – 80° / 18 sec		
Traction System	Travel Speed: 1.86 mph		
	Gradability: 23°		
	Track Ground Pressure: 6.71 psi		

Product specifications are subject to change without notice. No specific training or license is required to operate the SPYDERCRANE in most areas, but operators are responsible for knowing and meeting all safety requirements and regulations.

Standard Features Safety Equipment
<ul style="list-style-type: none"> • Full-function radio remote control • Centrally located infinite variable controls • Onboard self-diagnostic computer system • Hexagonal boom • Anti-two block system • Automatic hook stow system • Minimum wire rope automatic stop • Hydraulic circuit pressure relief valve • Bubble-style level for outrigger leveling • Rated Capacity Indicator (L.M.I.)
<p>* Electric Models are available in 208-230V 1Ø, 208-230V 3Ø and 440-460V 3Ø</p>

Options
<ul style="list-style-type: none"> • SPYDERWEB 5 Axis fixed Glass Manipulator - Direct attachment to boom for rigid application • MYLAR® non-marking tracks for indoor applications • Custom SPYDERCRANE trailer with track mats, tool box, outrigger pads and fuel containers • Boom Tip Mounted Aerial Work Platform (300lb capacity)



Visit us on the web at
SPYDERCRANE.COM



5326 W. Mohave St | Phoenix, AZ 85043
844.264.8994 | 602.442.4000
 Visit us on the web at **SmileyLiftingSolutions.com**